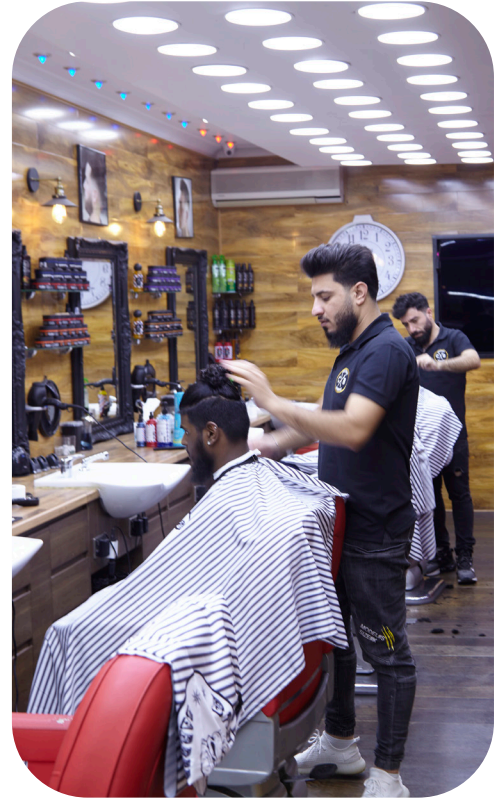


# GRANT PROGRAMME GUIDANCE



# GRANT PROGRAMME GUIDANCE

## BIG LOCAL BROAD GREEN BACKGROUND

Big Local Broad Green is a resident-led initiative dedicated to improving the lives of people in the Broad Green community. Our main goal is to support local organisations, helping them apply for and manage grants more effectively. To learn more about our mission, you can check out the details of the Broad Green Big Local Partnership on our website. Our activities are centered around our Hub on Keeley Road, which serves as both the heart of our operations and the base for our team.

Everything we do at BLBG, including how we distribute grants, is focused on achieving the goals set nationally for Big Local. These initiatives are carefully designed to bring tangible benefits to our local area and address the specific priorities of our community. The principles behind these goals guide our decision-making, providing a clear direction for our actions and projects. The Big Local Outcomes:

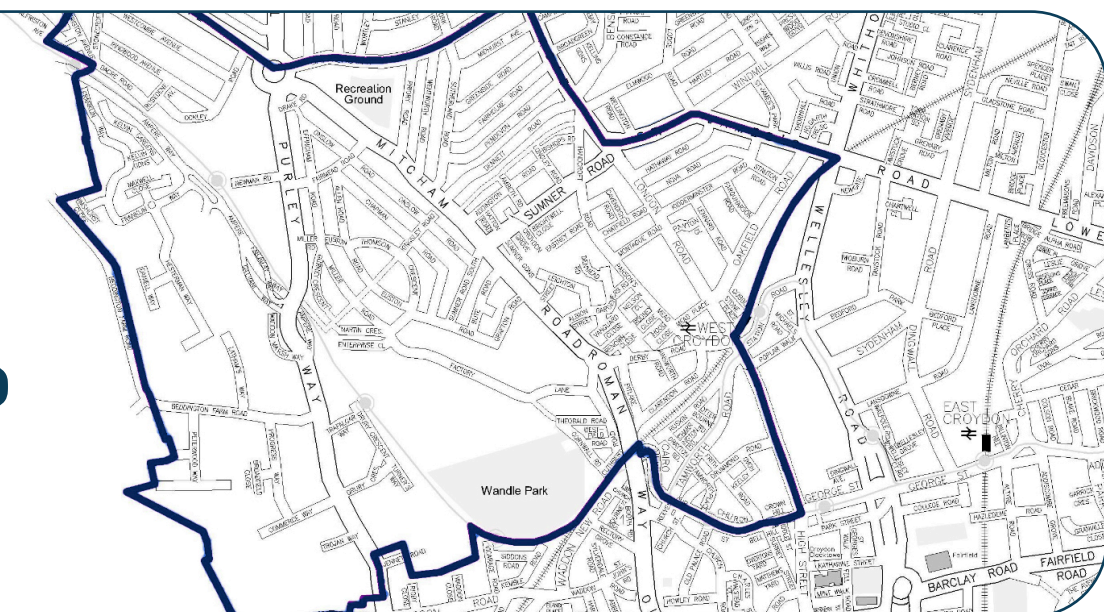
**Empowered Communities:** Communities will be better equipped to identify local needs and take decisive action in response to them.

**Skill and Confidence Enhancement:** People will experience an increase in skills and confidence, enabling them to continually identify and respond to evolving needs in the future.

**Community Impact:** The community will actively contribute to making a difference in addressing and prioritising its needs.

**Enhanced Quality of Life:** Residents will feel their area as an even better place to live, reflecting the positive impact of our collective efforts.

**BROAD  
GREEN  
AREA.**



## BLBG PLAN PRIORITIES 2023 ONWARDS

### ONE

#### LEAVING A LEGACY OF A MORE UNITED AND STRONGER COMMUNITY

- Being a community voice to ensure commitments are met
- Building community skills through the partnership
- Maximising assets and opportunities
- Creating a sense of family and belonging
- Connecting people who are isolated
- Inter-generational activities, partnership working and skills exchange
- Increasing inclusion, mending divisions and greater understanding

### TWO

#### SUPPORT TO VULNERABLE PEOPLE

- Ensuring support and engagement where there are gaps in available support
- Improve health and health awareness
- Access to information and signposting to information and support
- Welcoming new residents, including refugees/migrants and those moving into new developments

### THREE

#### IMPROVING OUR ENVIRONMENT

- Making the area greener

### FOUR

#### SUPPORT FINANCIAL LITERACY

- Financial inclusion/literacy
- Training & employment

## GRANT AND FUNDING

### What Grants are available?

The grants available range from a minimum of £500 to a maximum of £2,000 and should be utilised within one year of being awarded to a group. *Each group is eligible for only one grant per grant round.*

The application form for a BLBG grant requires details about the applying group, the project seeking support, its alignment with our priorities, and a comprehensive cost breakdown, including all expenditure items.

Additionally, projects are encouraged to secure support from other funders or offer help in kind/volunteers, and these contributions must be documented in the application.

#### All applications will have to provide information on:

1. Who the activity is aimed at and why (*young people, older people, people with special needs, isolated people and so on*)

2. The numbers of people who are proposed to participate in the project activities
3. The number of activities that are to be run using the grant
4. How they were promoted to show that the maximum number of relevant people as possible would know that the activity was taking place and could participate.
5. The ways in which it is planned by the applicant to show the difference the project has made to those who participated in the activities included in it.
6. Evidence - recipients of the grant will have to share in the form of interviews, surveys/ feedback forms, videos impact evidence during and upon completion of the project.

### Who is eligible to apply?

#### **Grants are only available for groups, not individuals.**

Groups who apply must:

1. Have a Constitution and Governing Committee
2. Be Not-For-Profit/Charity
3. Have a Bank Account.

*It is possible for groups who do not fit these criteria to apply in partnership with an organisation that fits these criteria and is willing to take responsibility for spending the grant, accounting for it (receipts invoices etc.) and reporting on the difference it has made.*

### What can Grants be spent on?

Proposals which will deliver activities within the Broad Green Local Area.

Grant may not be spent on or contribute to the costs of capital equipment (*cameras, computers, audio visual equipment, building decorations or refurbishment*), research, or the promotion of political or religious activities.

### How will Grants be awarded?

When evaluating received applications, members of the BLBG Partnership will prioritise addressing all established priorities named above.

The Partnership convenes regularly to promptly review applications, and in the event of additional inquiries or the need for further information, the Partnership will engage with applicants to reconsider any additional details or clarifications provided.

The Partnership's decision on each application is conclusive. Unsuccessful applicants will receive constructive feedback and guidance on alternative funding sources, along with recommendations on enhancing future applications.

### When will Grants be available?

To be informed upon application review.

## **BIG LOCAL BROAD GREEN**

**IT'S PEOPLE - YOUNG AND OLD, ARE CONNECTED,  
RESILIENT TO CHANGE AND PROUD TO LIVE HERE.**